

P-1
2" RIGID INSULATION
8" CONC. WALL @ 3000 PSI MIN
2 COATS DAMPROOFING
CULTURED STONE VENEER

P-2
1/2" APA EXP I RATED SHEATHING
6 MIL POLY V.B.
R-20 BATT INSULATION
2x6 STUD WALL @ 16"oc
1/2" APA EXP I RATED SHEATHING
(NAILING AS PER SHEAR TABLE)
BUILDING PAPER
CULTURED STONE VENEER

P-2B
6 MIL POLY V.B.
R-20 BATT INSULATION
2x6 STUD WALL @ 16"oc
1/2" APA EXP I RATED SHEATHING
(NAILING AS PER SHEAR TABLE)
BUILDING PAPER
CULTURED STONE VENEER

P-3
1 3/4" Ø SPRUCE LOGS
12" AVERAGE HEIGHT GAIN

P-4
1/2" G.W.B.
2x6 STUD WALL @ 16"oc
1/2" G.W.B.

P-5
1/2" G.W.B.
2x4 STUD WALL @ 16"oc
1/2" G.W.B.

P-6
1/2" G.W.B.
6 MIL POLY V.B.
R-20 BATT INSULATION
2x6 STUD WALL @ 16"oc
3/8" APA EXP I RATED SHEATHING
(NAILING AS PER SHEAR TABLE)
BUILDING PAPER
LOG SIDING

P-7
1/2" G.W.B.
6 MIL POLY V.B.
R-20 BATT INSULATION
2x6 STUD WALL @ 16"oc
3/8" APA EXP I RATED SHEATHING
(NAILING AS PER SHEAR TABLE)
FINISH AS PER CLIENT

F-1
4" CONCRETE SLAB
3000 PSI MIN
6 MIL POLY V.B.
6" 3/4" CRUSHED AND
COMPACTED GRANULAR FILL

F-2
FINISHED FLOORING
3/4" O.S.B SUBFLOOR
GLUED & SCREWED
1 1/2" TJI/PRO 150 FLOOR JOISTS
@ 24" o.c.

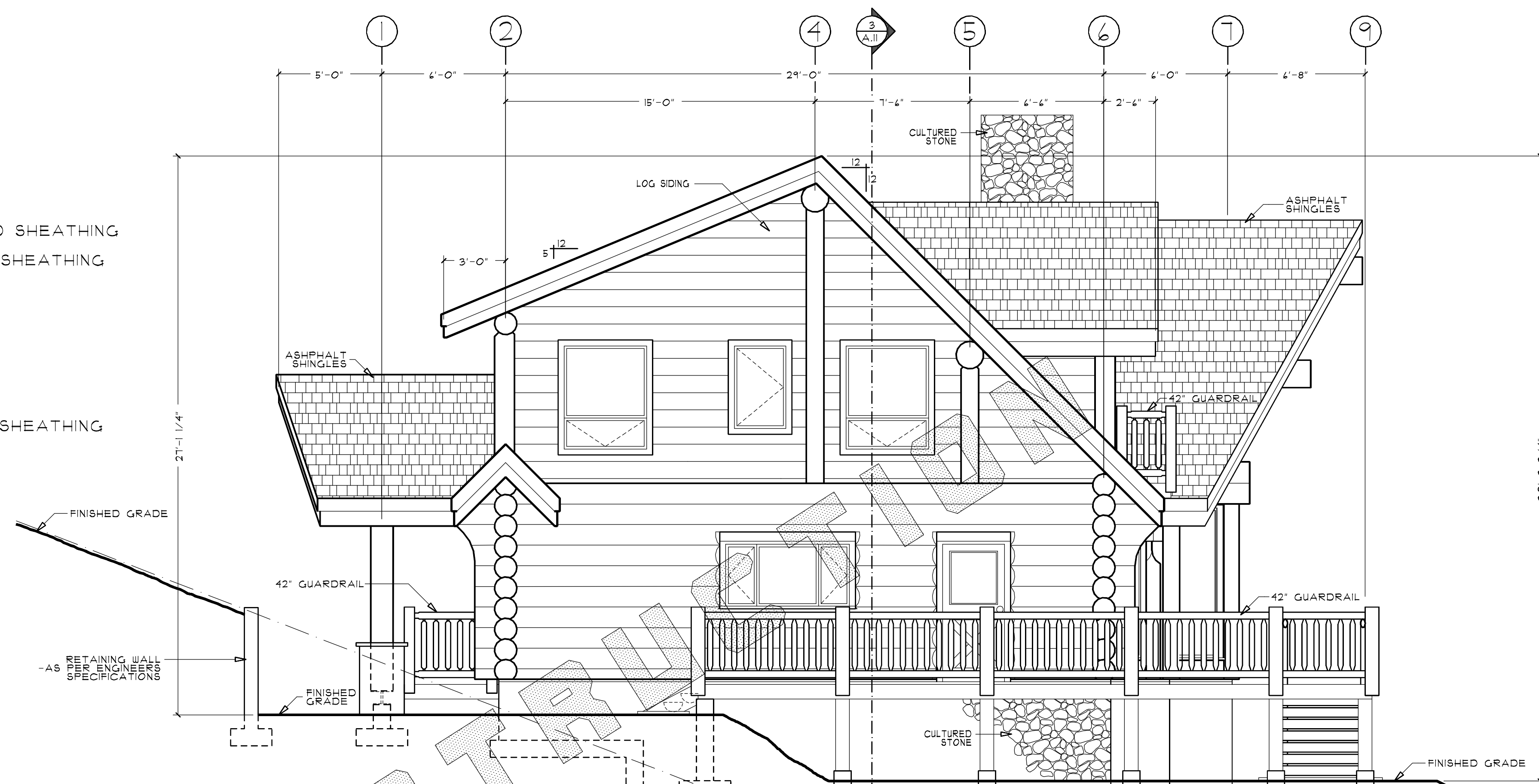
F-3
FINISHED FLOORING
3/4" O.S.B SUBFLOOR
GLUED & SCREWED
2x10" SPP#2/BTR FLOOR JOISTS
@ 24" o.c. c/w SOLID BLOCKING
RESILIENT CHANNEL
1x6 T&G PINE CEILING FINISH

F-4
1x6 DECKING
2x8 SPP#2/BTR DECK JOISTS
@ 24"oc
1x6 T & G PINE SOFFIT

F-5
1x6 DECKING
2x8 #2 SPP/BTR DECK JOISTS
@ 24"oc

R-1
ASPHALT SHINGLES
ROOFING MEMBRANE @ EAVES
3/4" APA 40/20 PSI-95 PLYWOOD SHEATHING
-ON 5/12 PITCH ROOF
1/2" APA 32/16 PSI-95 PLYWOOD SHEATHING
-ON 12/12 PITCH ROOFS
11 1/8" TJI/PRO ROOF RAFTERS
@ 24" o.c. SPACING
R-30 BATT INSULATION
6 MIL POLY V.B.
1x6 T&G PINE CEILING FINISH

R-2
ASPHALT SHINGLES
ROOFING MEMBRANE @ EAVES
1/2" APA 32/16 PSI-95 PLYWOOD SHEATHING
2x12 SPP#2/BTR RAFTERS
@ 16" o.c. SPACING
1x6 T&G PINE SOFFIT FINISH



2 LEFT ELEVATION
SCALE: 1/4"=1'-0"



1 REAR ELEVATION
SCALE: 1/4"=1'-0"

SHEAR WALL SCHEDULE (FRAMED WALLS)							
CONST. TYPE	EDGE NAILING	FIELD NAILING	SOLE PLATE TO FLOOR AND RIM	1/2" Ø ANCHOR BOLTS	5/8" Ø ANCHOR BOLTS	3/4" Ø ANCHOR BOLTS	MAX. LOAD (PLF)
FOR 3/8" PLYWOOD CDX PSI-95 or APA EXP I RATED PANELS (USE 8d NAILS)							
△6	6"	12"	16d @ 6" O.C.	36" O.C.	54" O.C.	54" O.C.	264
△2	2"	12"	16d @ 2" O.C.	16" O.C.	20" O.C.	24" O.C.	636
FOR 15/32" PLYWOOD CDX PSI-95 or APA EXP I RATED PANELS (USE 10d NAILS)							
1/2-2	2" x	12"	20d @ 2" O.C.	12" O.C.	18" O.C.	24" O.C.	110
FOR 15/32" PLYWOOD CDX PSI-95 or APA EXP I RATED PANELS EACH SIDE OF WALL (USE 10d NAILS)							
1/2-33	3" x	12"	2 Rows of #9X3" Long Top screws @ 3" o.c.	12" O.C.	12" O.C.		1200
* 4-PLY STUDS REQUIRED AT PANEL EDGES							
NOTE: THE SHEAR CONNECTIONS SPECIFIED IN THESE SHEAR TABLES ARE ONLY REQUIRED FOR THE LENGTH OF WALL WHICH IS CONTINUOUS FROM TOP PLATE TO BOTTOM PLATE							
SHEAR WALL SCHEDULE (LOG WALLS)							
CONST. TYPE	LAG SPACING	PIPE SPACING	ANCHOR BOLT SPACING				MAX. LOAD (PLF)
△2	N/A	96"	48" O.C.				212
△5	N/A	36"	16" O.C.				121
△6	N/A	24"	12" O.C.				1090
PIPE SPACING INDICATES ONE 1/8" X 19 1/2" STEEL PIPE PER INCH AS PER TABLE - ALL LOG COURSES MUST BE CONNECTED - STEEL PIPES MUST BE PLACED IN 13/16" DIA. HOLES AND COUNTERSUNK 1/4"							
PIPES SHALL PENETRATE EACH LOG BEING CONNECTED A MINIMUM OF 1 INCHES. PLACE PIPES AS PER SHOP DWGS. (LOG WALL ELEV.)							
ANCHOR BOLT SPACING INDICATES A 5/8" X 10" ANCHOR BOLT WHICH CONNECTS SILL PLATE TO TOP OF CONCRETE FOUNDATION WALL							

ISSUED FOR PERMIT
REVISIONS
4 MAR 2003
2 17 JUNE 2003
3
4
5

The Log Connection
101-208 Ellis St.
V2A 4L6
Phone: (250) 770-9031
Toll Free 1-888-207-0210
E-mail: loghouse@thelogconnection.com
www.thelogconnection.com

The Log Connection
Log Home Design Specialist

ELEVATIONS
PAGE TITLE
1/4" = 1'-0"
SCALE
NOV. 18 2002
DATE
ROBERT WOOD
DRAWN BY
STEVE HANCOCK
CHECKED BY

A.2